

Say goodbye to dry stressed hands

-

Sensational Cream Gel for hands

GfN GmbH & Selco GmbH

3/2020

**Keep calm.
Age slow.**

Nature needs no cosmetics,
but cosmetics need nature.



Let's have a look on the Background

- In times of Corona Virus crisis washing our hands multiple times daily with common hand soap is our best way of fighting the infection risk.
- Disinfecting agents are used more frequently to clean surfaces as well as our hands.



©Lotus_studio/shutterstock.com

As a result the skin barrier gets disrupted leading to very dry and itching stressed skin with aching cracks



©Alila Medical Media/Fotolia.com

How can we support our skin?

The very stressed skin has a couple of essential and crucial needs:

- Provide an instant and long-lasting **deep moisturization**
- Reduce **itching** and **inflammations**
- Help recovering the **skin barrier function**
- Recover a soft and **pleasant skin feeling**



Stay calm, we got the perfect solution!

A natural based **high-tech** cream gel with outstanding properties for all skin types, also **sensitive skin**:



93_E060_1706

**Sensational Cream-Gel for Hands
(with a soft touch and powerful actives)**

Claims:

Regenerates skin barrier function
Very strong anti-irritant (reduction of IL-6)
Hydration
Film forming
Not sticky
Smoothes skin

Phase	Ingredient (our mat.no in brackets)	INCI	Supplier	Dosage [%]
A	Deionised Water	Aqua	/	67,35
	Glycerin 99,8% DAB	Glycerin	Gustav Heess	5,00
	Pentylene Glycol	Pentylene Glycol	Cosnaderm	7,00
	Konjac Mannan gel powder (2034)	Glucomannan or Amorphophallus Konjac Root Extract	GfN	0,70
	Genuvisco® carrageenan CG-131	Chondrus Crispus	CP Kelco	0,10
B	Amisoft® HS-11P	Sodium Stearoyl Glutamate	Rahn AG	0,20
C	Avocado Oil, raf. DAC	Persea Gratissima Oil	Henry LaMotte	6,00
	Tego®Alkanol 1618	Cetearyl Alcohol	Evonik	1,50
	Sabal Serrulata lipophilic (5053)	Serenoa Serrulata Fruit Extract, Tocopherol	GfN	4,00
D	Quince Extract 2.5% NP (6021)	Aqua, Pyrus Cydonia Seed Extract	GfN	8,00
	Perfume Cherry Blossom 1 E_1325550	Parfum	Mane	0,15
	Citric Acid (20% solution in water)	Aqua, Citric Acid	Merck	q.s.
				100,00

Sensorial and active benefits combined



An overview of the **sensorial benefits**:

- Light, lotion-like glossy texture
- Translucent gel-like quick and easy spreading
- Instant absorption with noticeable deep moisturization film

Strong **actives** that focus on basic needs:

Strong **moisturizing** active with film forming properties comparable to HMW Hyaluronic acid

Phytosterol-rich active supporting **skin barrier function** repair and **anti-irritation**

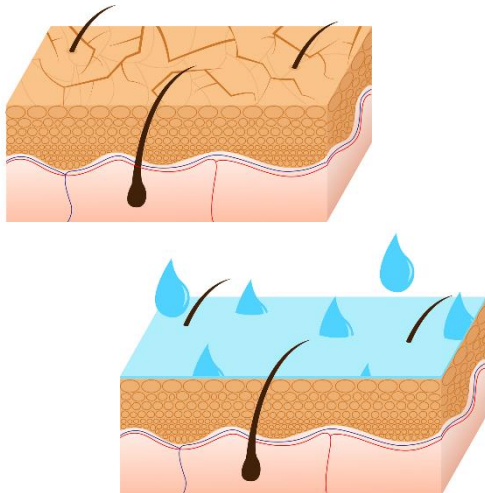
Sensitive polysaccharide extract for instant **moisturization** and **anti-inflammation**

Phase	Ingredient (our mat.code in brackets)
A	Deionised Water
	Glycerin 99,8% DAB
	Pentylene Glycol
	Konjac Mannan gel powder (2034)
B	Genuvisco® carrageenan CG-131
	Amisoft® HS-11P
C	Avocado Oil, raf. DAC
	Tego®Alkanol 1618
	Sabal Serrulata lipophilic (5053)
D	Quince Extract 2.5% NP (6021)
	Perfume Cherry Blossom T E_1325550
	Citric Acid (20% solution in water)

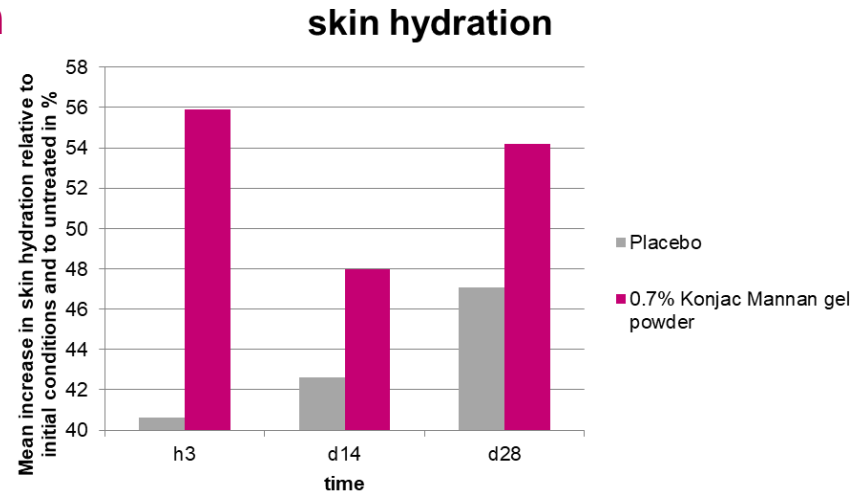
Konjac Mannan: a film former for deep moisturization

In vivo studies on 20 female volunteers at the age of 22-64 years with dry to very dry skin. Application twice a day against placebo over 4 weeks:

- improved **skin hydration** up to **15% after 3h** with lasting **moisturization film**



©rojdesign/Fotolia.com

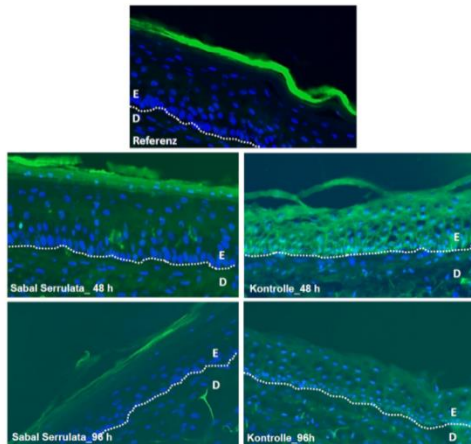


Graphical analysis of the skin hydration determined by corneometer, compared to placebo.

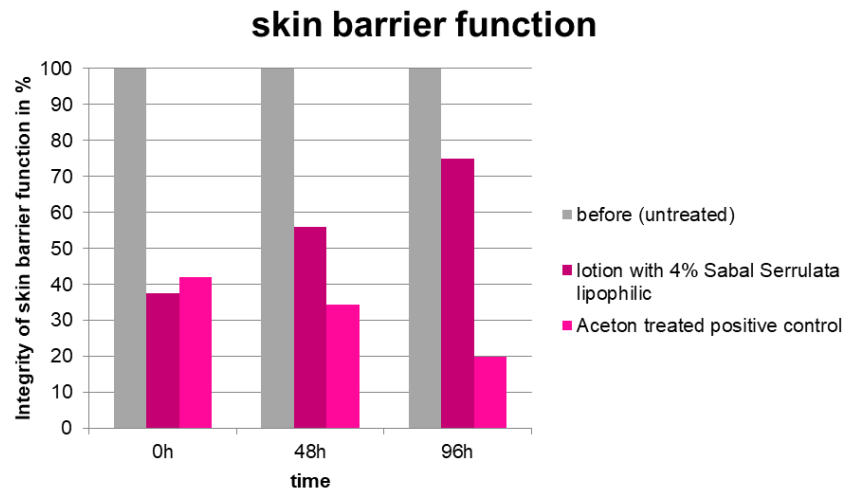
Sabal Serrulata: an effective skin barrier function savior

Ex vivo studies using Phenion® 3D-full skin models. Application twice a day over 4 weeks:

- regenerated **skin barrier function up to 55% after 48h**



Histological assignment. E: epidermis. D: dermis. Dotted line: dermoepidermal junction zone. Green: Luciferase yellow staining. Blue: cell core (Dapi). Exposer time Dapi: 30ms. Exposure time luciferase: 500ms.



Graphical analysis of the integrity of skin barrier function determined by TEER, compared to positive control.

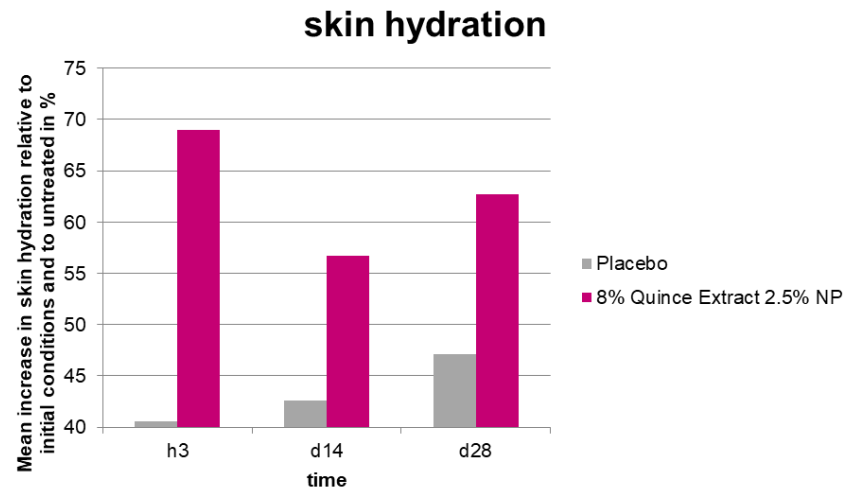
Quince Seed Extract: immediate moisturization for sensitive skin

In vivo studies on 20 female volunteers at the age of 22-64 years with dry to very dry skin. Application twice a day against placebo over 4 weeks:

- immediate skin hydration of 28.4% after 3h



©forestermax/Fotolia.com



Graphical analysis of the skin hydration determined by corneometer, compared to placebo.

So let's get started right!

Hight-tech meets natural proven activity, targeting on the basic needs. So be trendy and stay focused!

It's in your hands now!



©Paintersaba/Fotolia.com

Please contact us for more information about additional activity studies and applicational questions! We're happy about your request!



**Keep calm.
Age slow.**

Nature needs no cosmetics,
but cosmetics need nature.